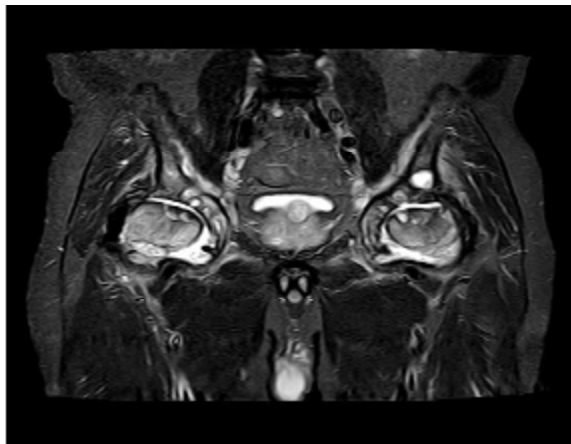


**Figure (1):** axial T2WI MRI show right femoral head low signal intensity and left femoral head heterogeneous signal with double line sign in male patient 55 years old with history of bilateral hip joints and low back pain for years, denoting right grade D and left grade C avascular necrosis.



**Figure (2):** coronal T2W MRI showing loss of spherical contour of both femoral heads, narrow joint space, osteophyte lipping, synovial thickening and subchondral cystic changes at both joints in male patient 62 years old with history of bilateral hip joints and low back pain with inability to walk, denoting bilateral osteoarthritis.