

Figure (1) : Immunohistochemical expression of NGF protein in cirrhotic patients with pruritus. Strong positive cytoplasmic immunoreactivity seen in: In the epidermis (A 200x-B 200x-C 400x)In the eccrine glands (D 400x-E 400x-F 400x), Hypertrophied nerves (G 200x-H 400x-I 200x)

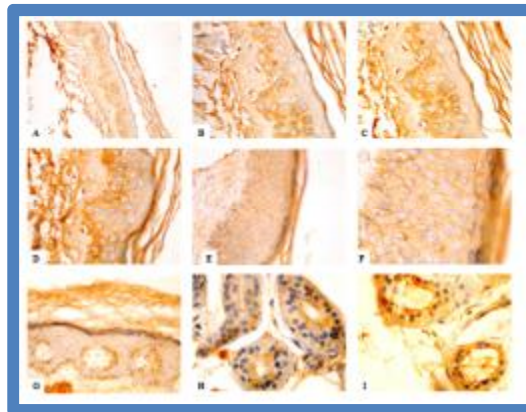


Figure (2):Immunohistochemical expression of NGF protein in cirrhotic patients without pruritus. Positive weak to moderate cytoplasmic immunoreactivity seen in:
In the epidermis (A 200x -B,C,D 400x -E 200x -F 400x -G 200x)In the eccrine glands (H,I 400x)

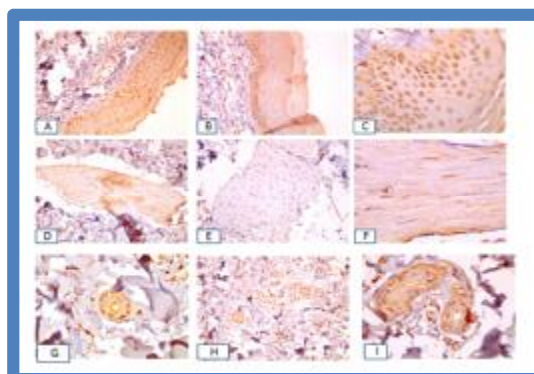


Figure (3):Immunohistochemical expression of NGF protein in healthy skin and positive control. Positive weak and moderate cytoplasmic immunoreactivity seen in:

Epidermis (A 200x, B 200x, C 400x)
Nerves (D 200x, E , F 400x)
Eccrine glands (G 200x, H 100x, I 200)

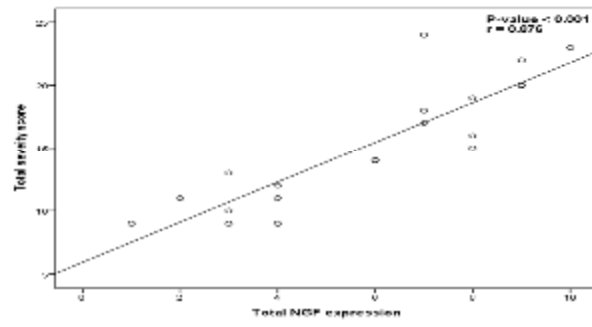


Figure (4):Correlation between severity score and NGF expression in patients with pruritus (group 1).