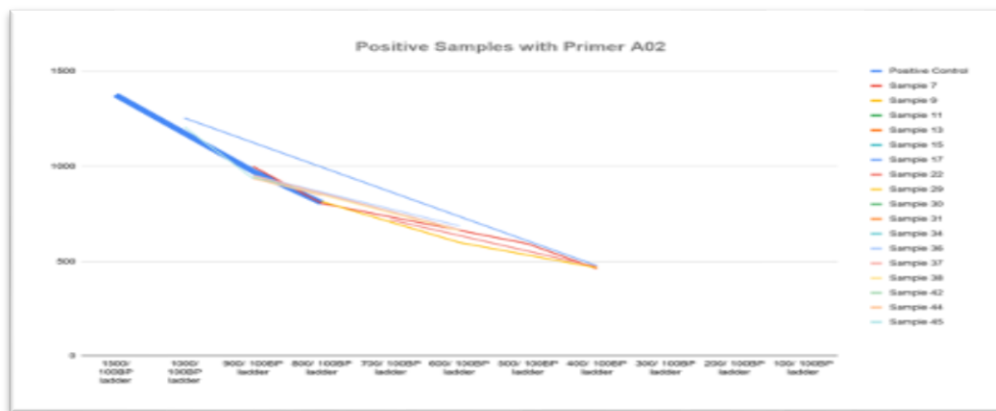


Figure 1: Plotting the molecular weights of the positive bands with Primer A01. Positive Samples showing very similar bands including the positive control (thick blue line)



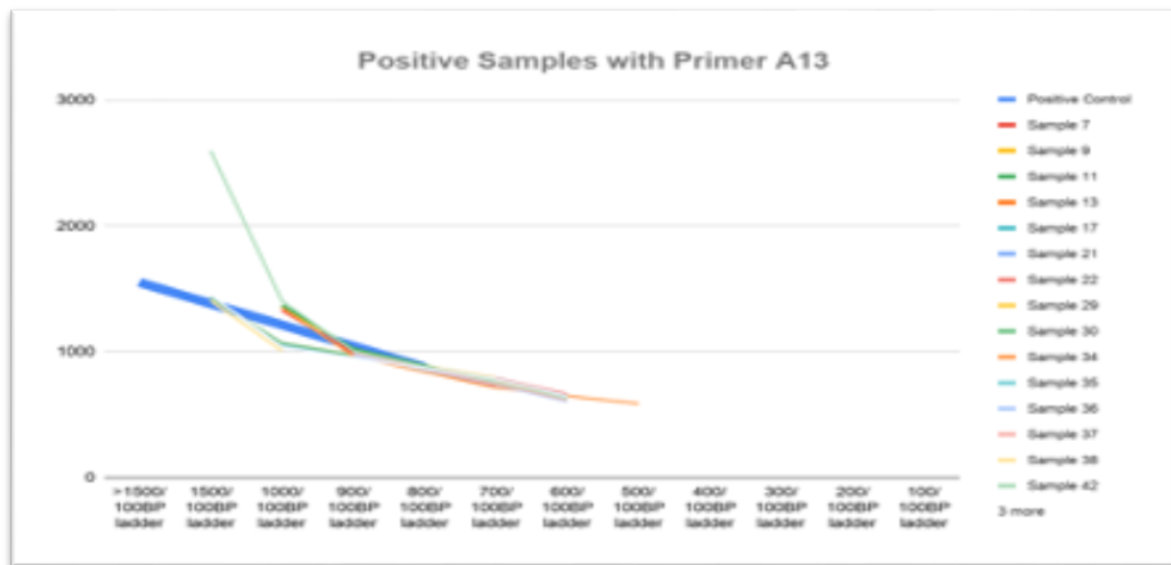


Figure 3: Plotting the molecular weights of the positive bands with Primer A13. Three groups of bands can be seen;

- (1) the positive control (thick blue arrow),
- (2) samples 7, 9, 11, 13, 34, 35, 36, 37, 42 and
- (3) samples 17, 21, 22, 29, 30, 38, 44, 45 and 47.

Figure 4: Plotting the molecular weights of the positive bands with Primer Y20. Two groups of bands can be seen; the positive control (thick blue arrow), samples 7, 9, 17, 21, 22, 29, 31 and 38.