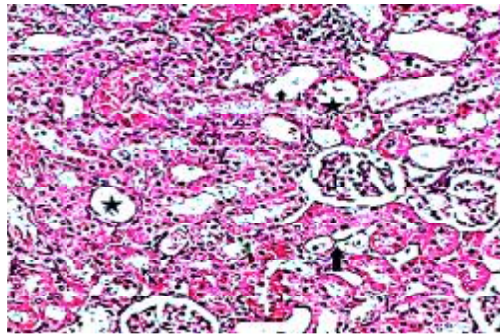


Fig(1): A photomicrograph of the control kidney showing, the normal architecture of the kidney. the renal corpuscles composed of glomerulus (G) and surrounded by Bowman's capsule. the renal tubules modified into proximal (P) and distal (D) tubules (H&E 200).



Fig(2): A photomicrograph of the kidney treated by (100mg/Kg of ZnO NPs) showing, some of PT loss their brush border (stars), However some of them still have brush border (arrow) and some of DCT their nucleus appear dense (arrow heads) (H&E 200).

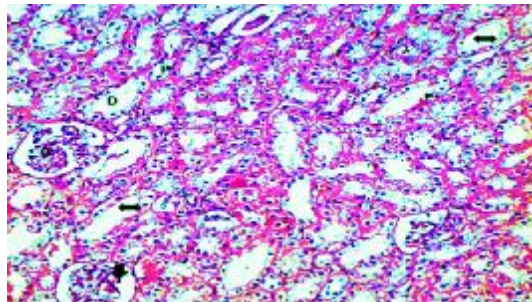


Fig. (3): A Photomicrograph of the kidney (treated by 250mg/Kg of ZnO NPs) showing PCT loss their brush border and there is vacuolation of their cytoplasm (left-right arrows), and increase the Bowman's space with intact parietal layer with congestion of intraglomerular capillaries (arrow head) (H & E 200).