

Figure 1: Expression of Bcl-2 in non-atypical simple hyperplasia (A), atypical simple hyperplasia (B), non - atypical complex hyperplasia (C) atypical complex hyperplasia (D), expression of ER in endometrial hyperplasia (E) and expression of PR in endometrial hyperplasia (F). Original magnification is 200X in A, B, C and 400X in others.

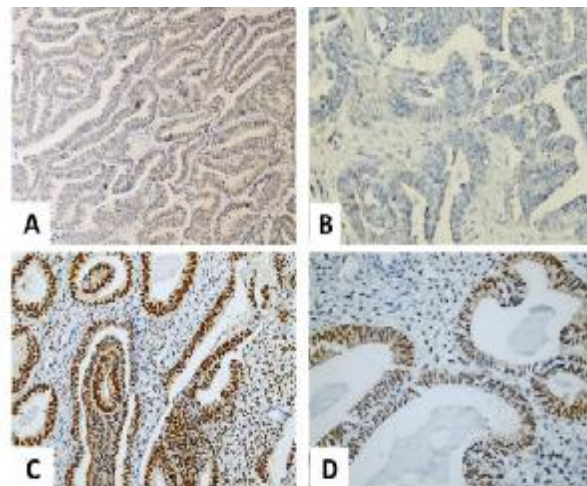


Figure 2: Expression of Bcl-2 in endometrioid adenocarcinoma (A), serous endometrial carcinoma (B), expression of ER in endometrial carcinoma (C) and expression of PR in endometrial carcinoma (D). Original magnification is 400X in D, B and 200X in the others.

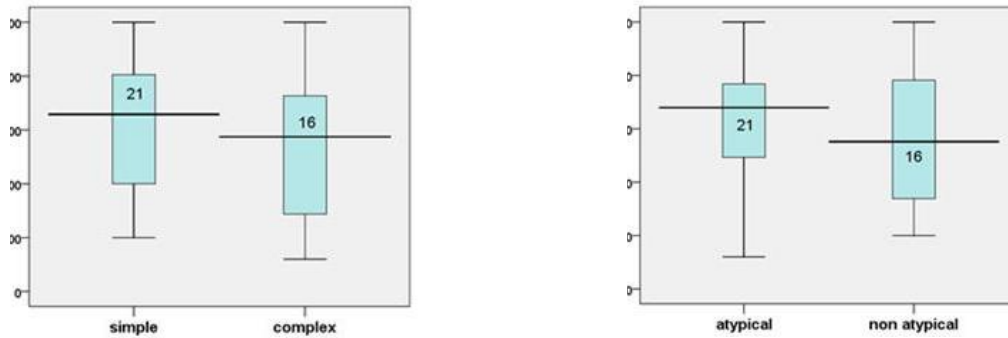


Figure 3: Expression of Bcl-2 in simple and complex endometrial hyperplasia (A) and in atypical and non-atypical endometrial hyperplasia (B). The horizontal bars represent median values; the boxes represent 50th percentiles; whiskers represent range of data and the numbers refer to total number of cases in each group.

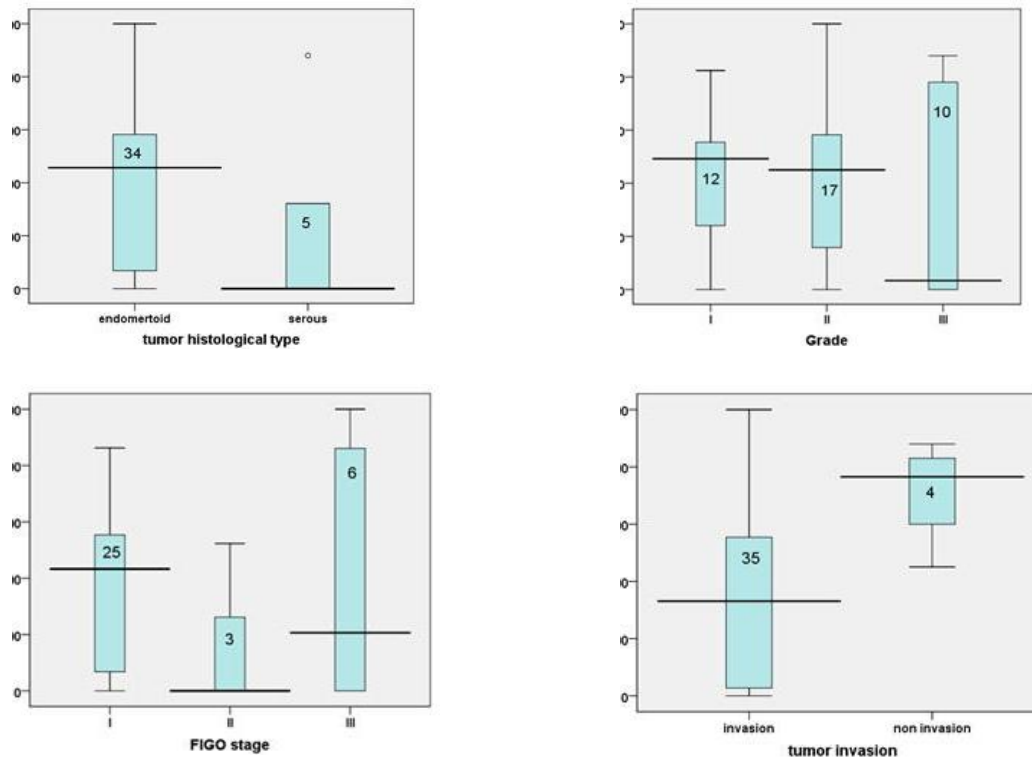


Figure 4: Expression of Bcl-2 in different histological types(A), different grades (B), different FIGO stages (C) and different invasive potential (D) of endometrial carcinomas. The horizontal bars represent median values, the boxes represent 50th percentiles; and whiskers represent range of data; the circles refer to outlier values and the numbers refer to total number of cases in each group.

