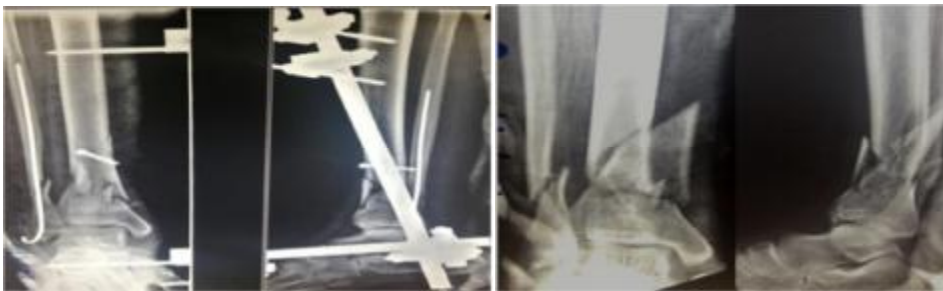




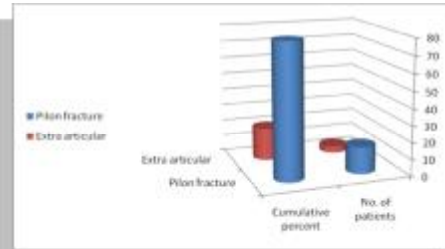
(Intraoperative picture)



(Postoperative X. ray)

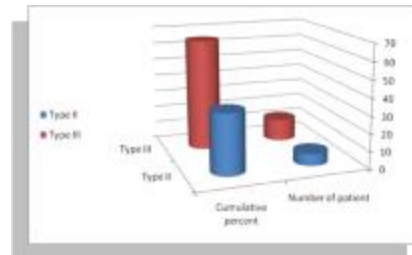
(Preoperative X-ray)

Fracture level	No. of patients	Cumulative percent
Pilon fracture	16	80
Extra articular distal tibialfr.	4	20
Total	20	100

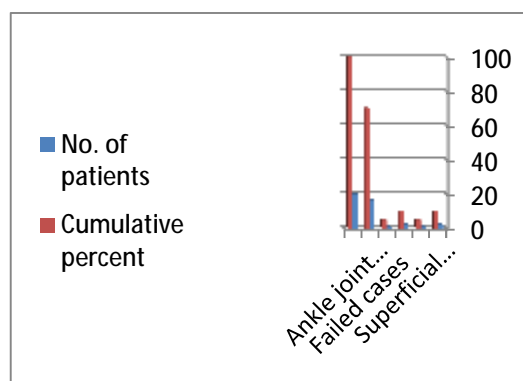


(fracture level)

Type of fracture	Number of patient	Cumulative percent
Type II	7	35
Type III	13	65
Total	20	100



Complications

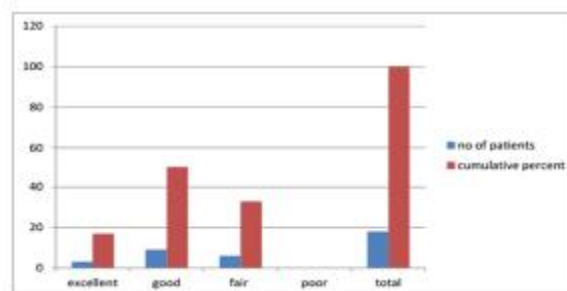


(Postoperative complication)

The results according to Olerud and Molander score were

(Olerud and Molander score)

	Number of patients	Cumulative percent
Excellent	3	15%
Good	9	45%
Fair	6	30%
Poor	0	0%
Total	20	100%



(Olerud and Molander score)