

used to examine 200 eye . the mean \pm SD of macular thickness by area in these eyes are reported in table (1)

Sectors:

- CS : Central subfield ,
- IS : inner superior
- IN : inner nasal
- II : inner inferior
- IT : inner temporal ,
- OS : outer superior ,
- ON : outer nasal ,
- OI : outer inferior ,
- OT : outer temporal

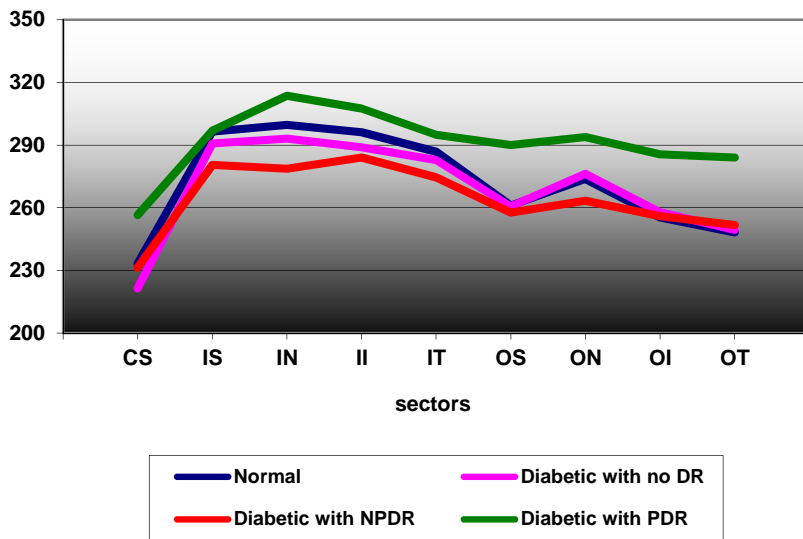
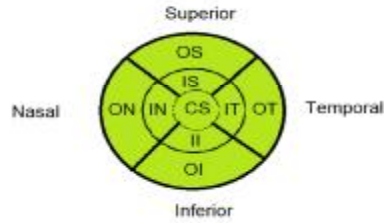


Figure (1): Sectorized analysis of retinal thickness