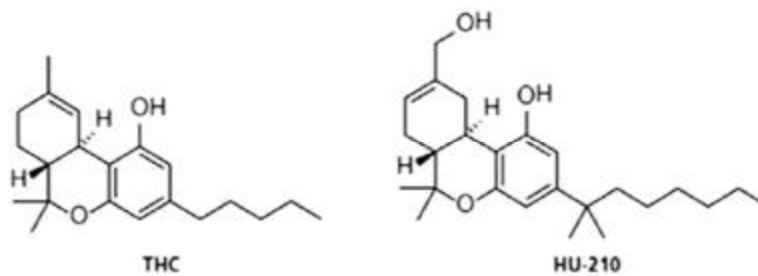


Figure (1): Regional emergence of NPS by groups (UNODC, 2013b).



Figure (2): the colorful packages of the SCs (Spaderna et al., 2013).



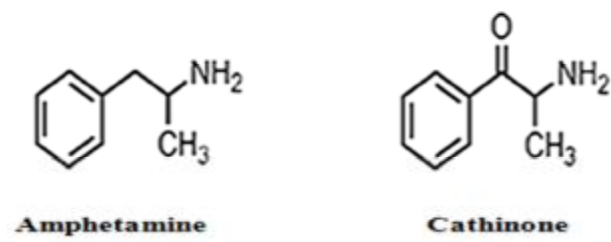


Figure (4): Structure similarity of cathinone to amphetamine (Baumann et al., 2014

).

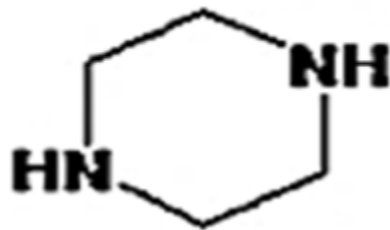


Figure (5): Chemical structure of Piperazine(Arbo et al., 2012)