

Fig. 1: Liver weight coefficient

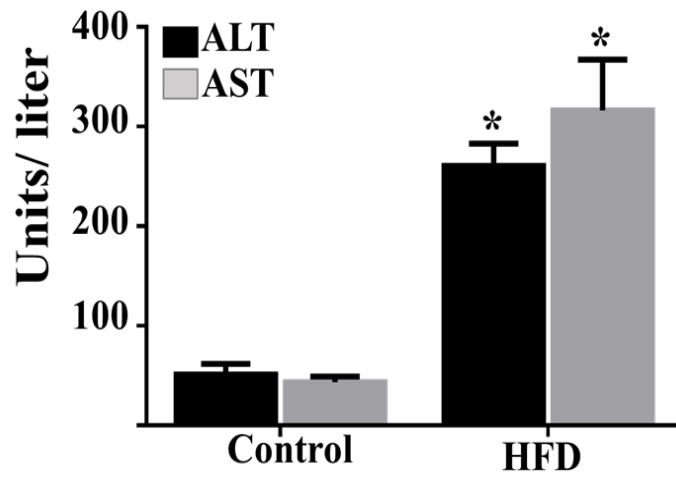


Fig. 2: liver enzymes

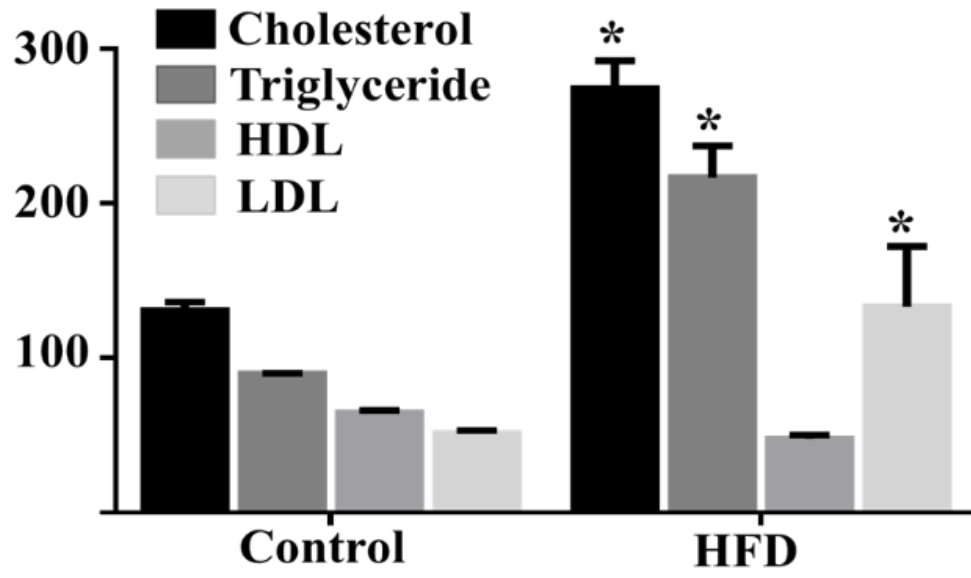


Fig. 3: Plasma FFA levels

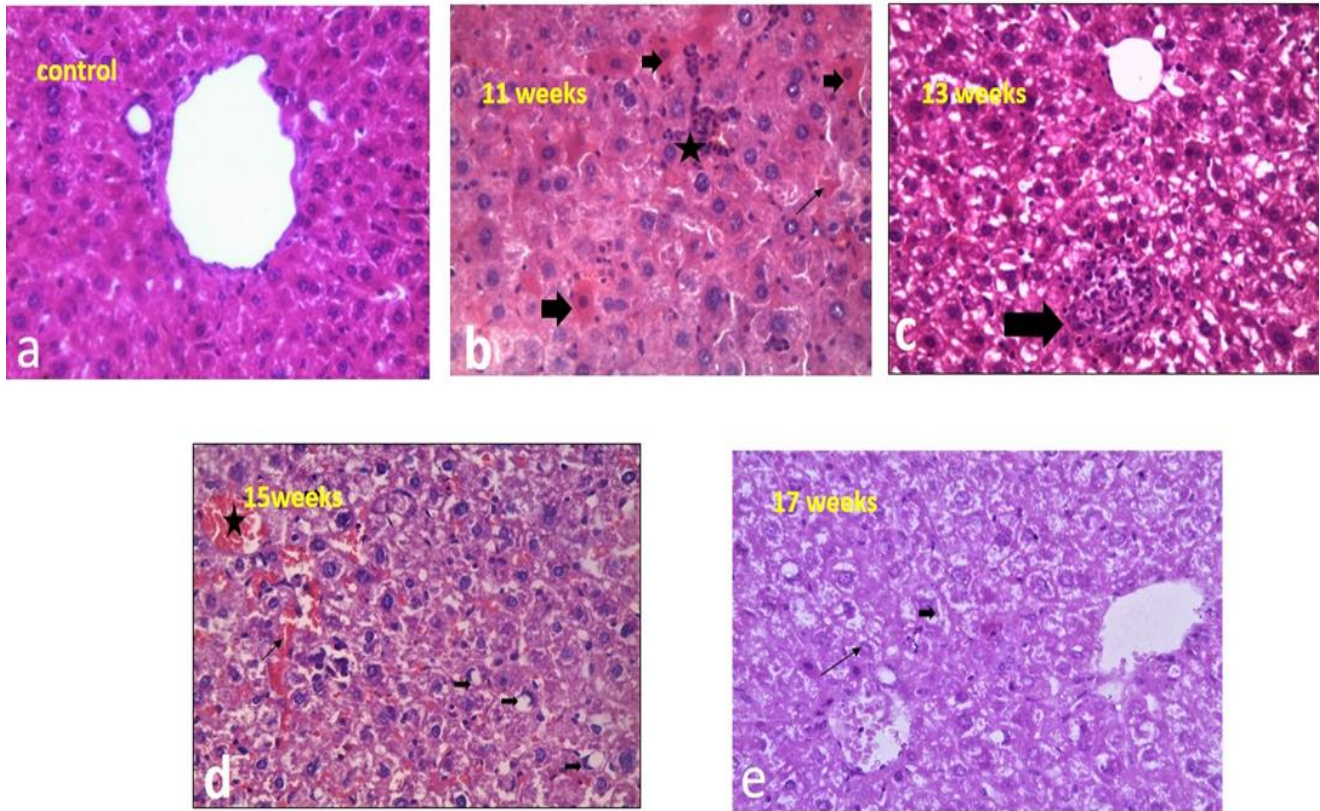


Fig .4: Photomicrographs of liver sections from animals of control groups and HFD groups.

(a) control liver with normal architecture and hepatocytes radiating from the central vein with acidophilic cytoplasm and central rounded vesicular nucleus. (b) HFD group at 11th-week changes in form of inflammatory cellular infiltration (star), apoptotic hepatocytes (thick arrows), and sinusoidal congestion(arrow). (c) HFD group at 13th-week changes in form of inflammatory cellular infiltration (thick arrow) and rarified cytoplasm of most of the hepatocytes. (d) HFD group at 15th-week changes in form of macrovesicular steatosis (thick arrows), sinusoidal congestion (thin arrow), and central vein congestion (star). (e) HFD group at 17th-week changes in form of macro and microvesicular steatosis, central vein congestion, Mallory-Denk bodies (thick arrow), and glycogenated nuclei (thin arrow) (H and E ×400)