

Figure (1): Electrophoresis of PCR products with primers for ica A. Lane M, 100 bp molecular weight marker; from lane 1, to lane 6, 188-bp bands from ica A positive samples; lane 7, negative control.

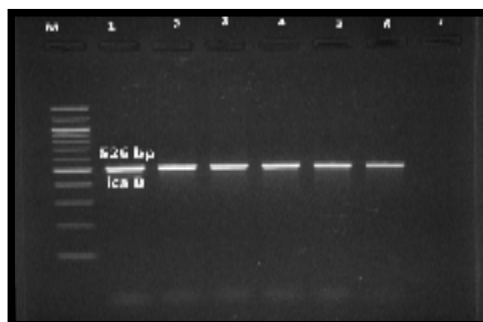


Figure (2): Electrophoresis of PCR products with primers for ica B. Lane M, 100 bp molecular weight marker; from lane 1, to lane 6, 526-bp bands from ica B positive samples; lane 7, negative control

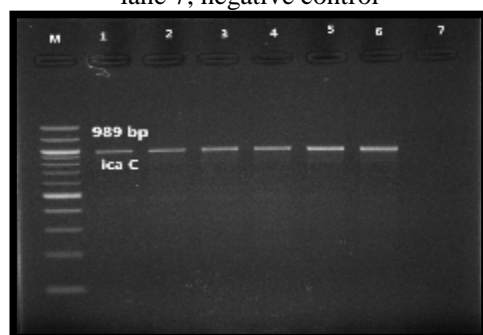


Figure (3): Electrophoresis of PCR products with primers for ica C. Lane M, 100 bp molecular weight marker; from lane 1, to lane 6, 989-bp bands from ica C positive samples; lane 7, negative control.

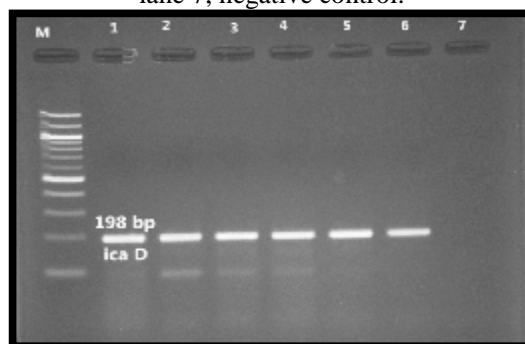


Figure (4): Electrophoresis of PCR products with primers for ica D. Lane M, 100 bp molecular weight marker; from lane 1, to lane 6, 198-bp bands from ica D positive samples; lane 7, negative control

