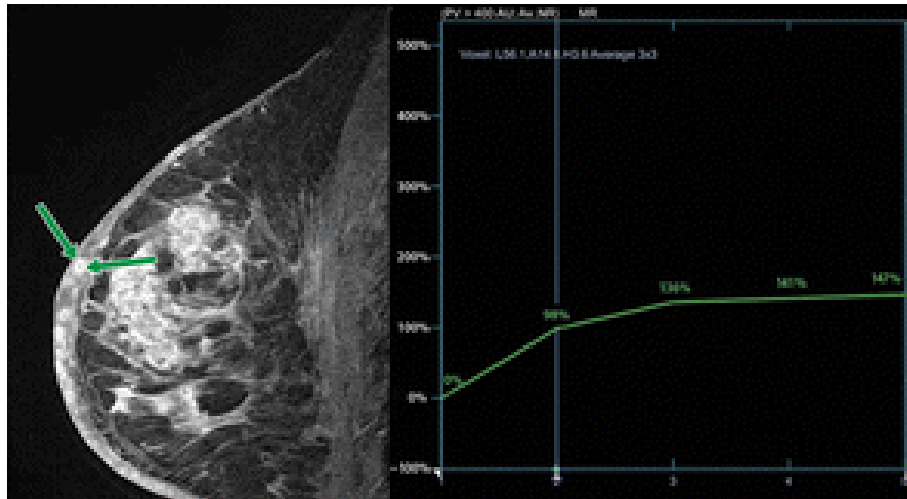
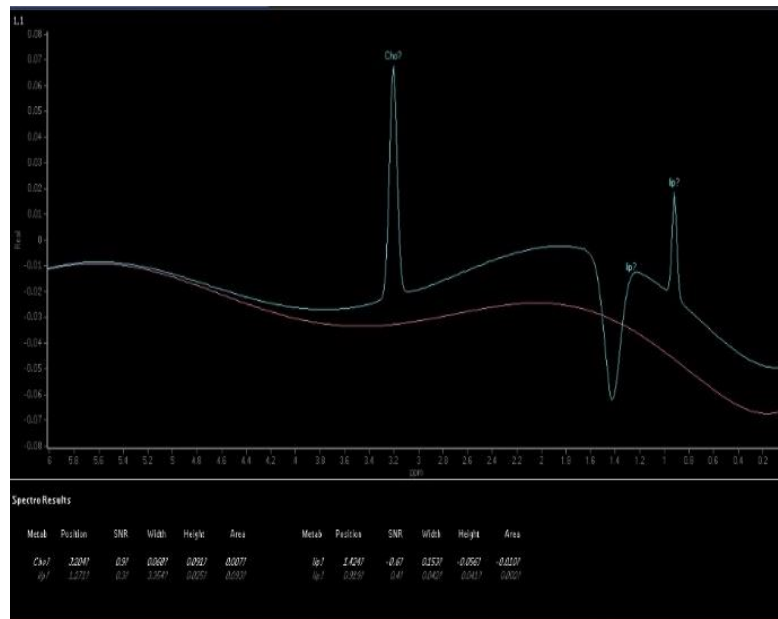


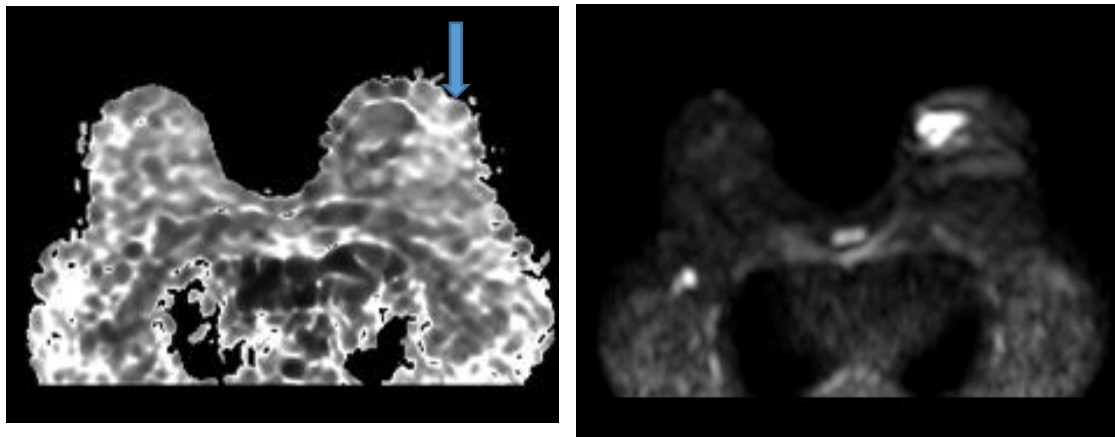
**(fig 1)** Post-contrast T1WI from the first minute (A) to the fourth minute (B) showing gradual intense homogenous enhancement of bilateral mammary fibroadenomas. <sup>(10)</sup>.



(fig 2) A 45-year-old lady with inflammatory breast cancer in her right breast, post-contrast T1WI indicates enhancing lesions with thick skin (arrows). The type II plateau curve can be seen in the time-signal intensity curve. <sup>(13)</sup>.



**Fig 3 )** MRS showing high choline level (0.7 mmol/l) at 3.22 ppm in a case of Lt mammary malignant featuring mass which is proved by a biopsy to be IDC <sup>(16)</sup>



**(fig4)** Lt mammary malignant mass with restricted diffusion at DWI at Lt sided image, the low signal at ADC map at Rt sided image and NB...its ADC value was detected as  $(0.8 \times 10^{-3} \text{ mm}^2/\text{s})$  <sup>(21)</sup>

