

Figure (1): Correlation between platelet count and MPV in hyper-destructive thrombocytopenia ($r = -0.45$, $p = 0.007$)

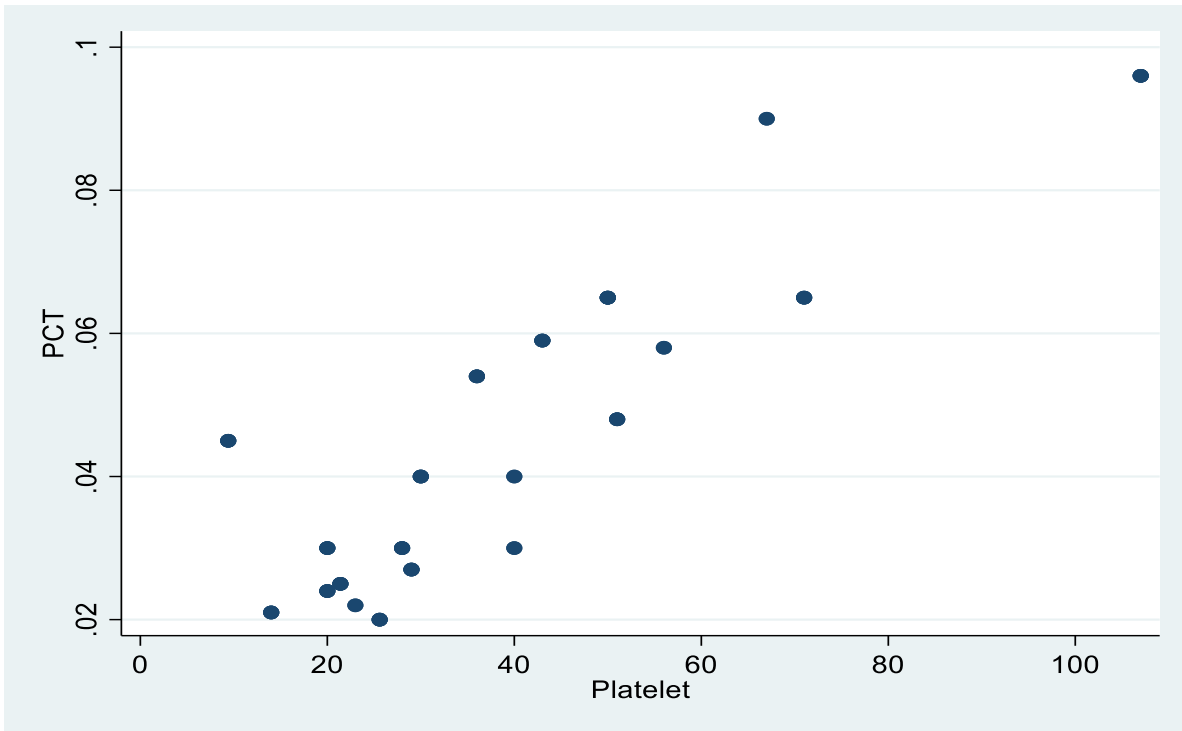


Figure (2): Correlation between platelet count and PCT in hyper-destructive thrombocytopenia ($r = 0.80$, $p < 0.0001$)

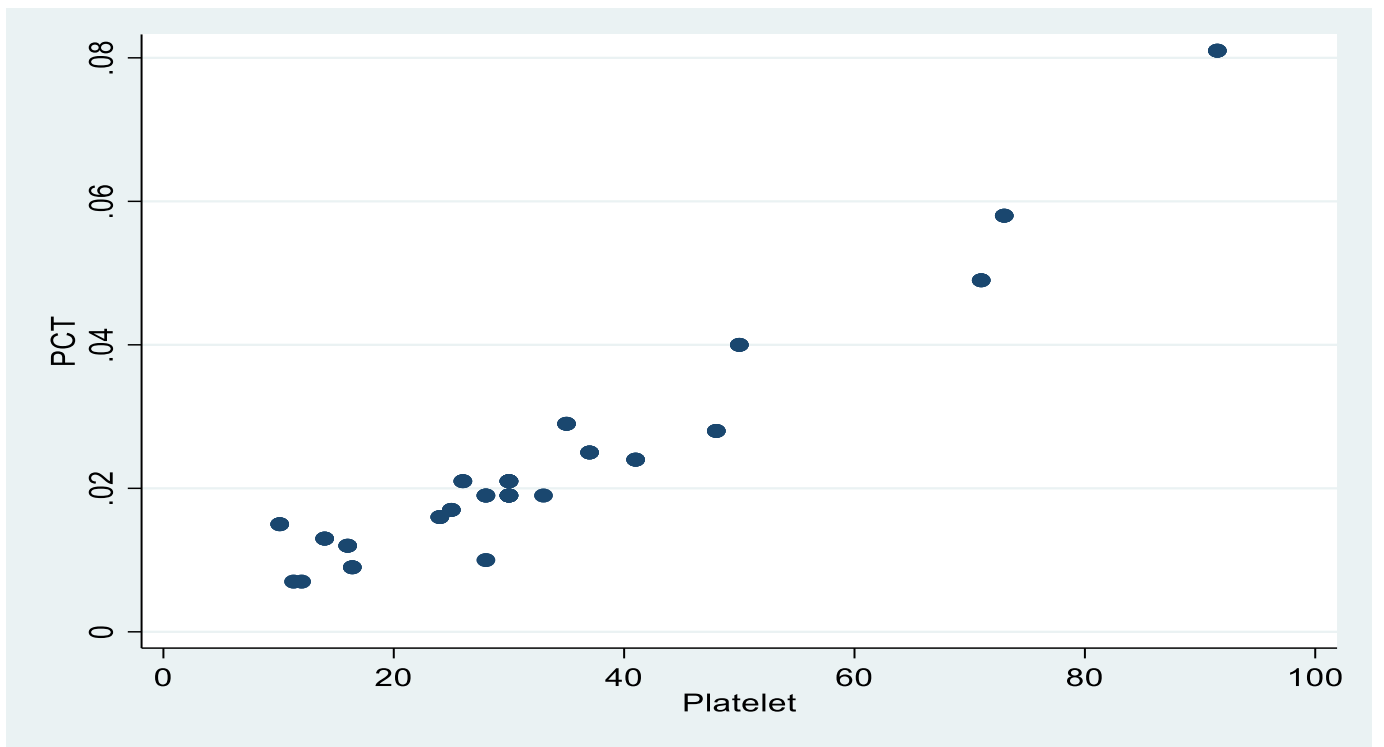


Figure (3): Correlation between platelet count and PCT in hypo-productive thrombocytopenia ($r = 0.93$, $p < 0.0001$)