

Fig(1a): Median age in adults and children of studied groups.

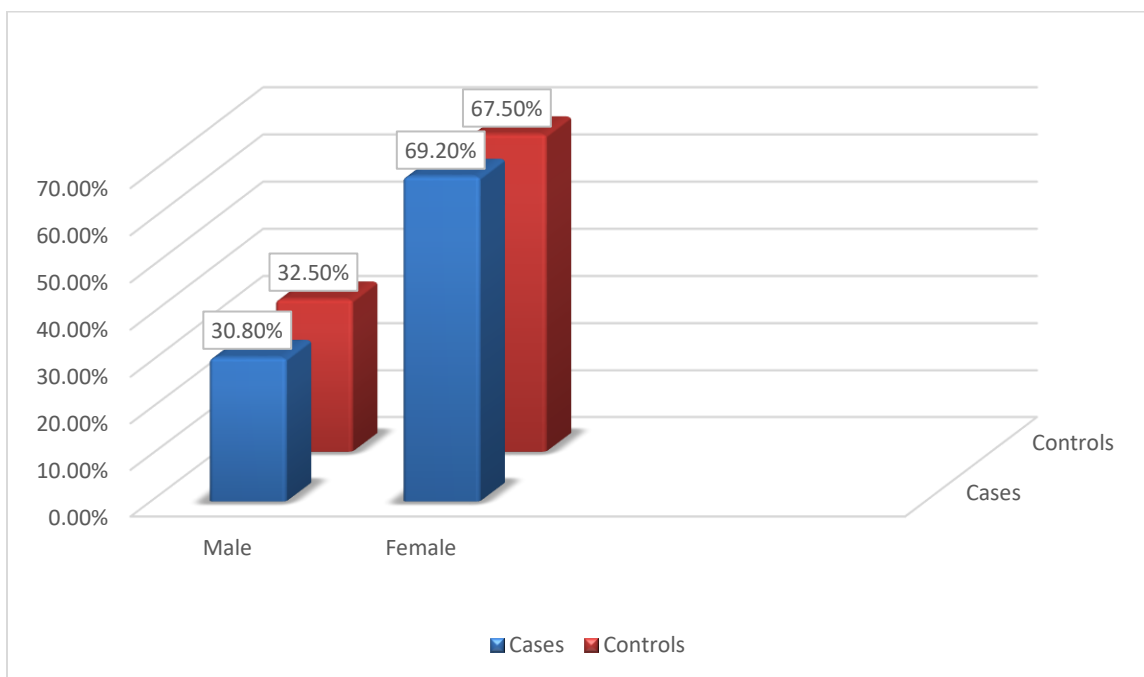


Fig (1b) Sex in patients and control group.

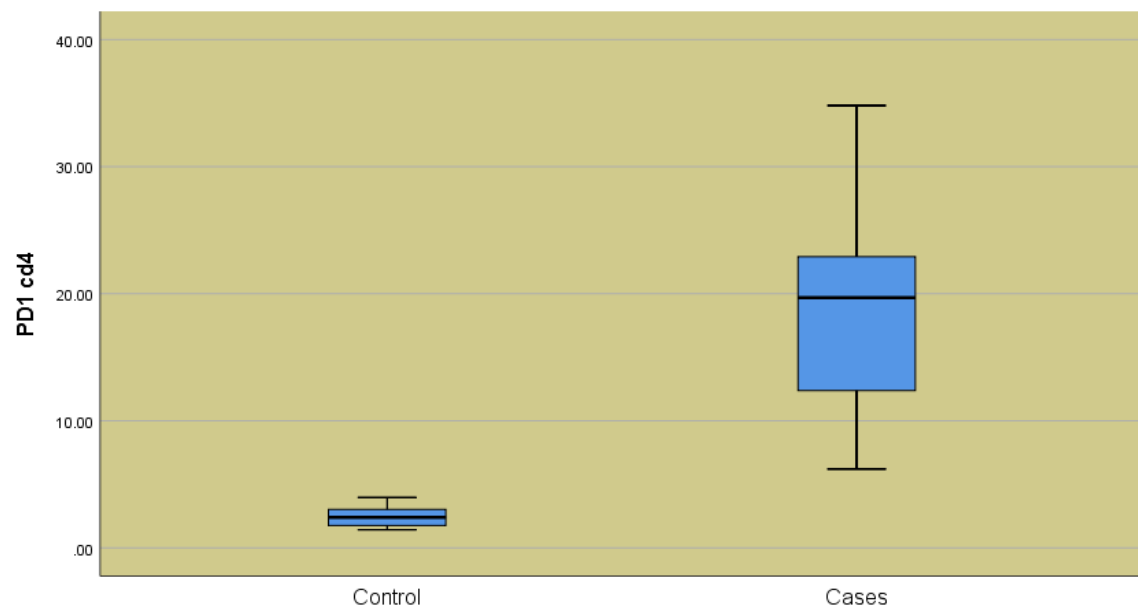


Fig (2): Comparison between case and control group regarding PD-1 expression.

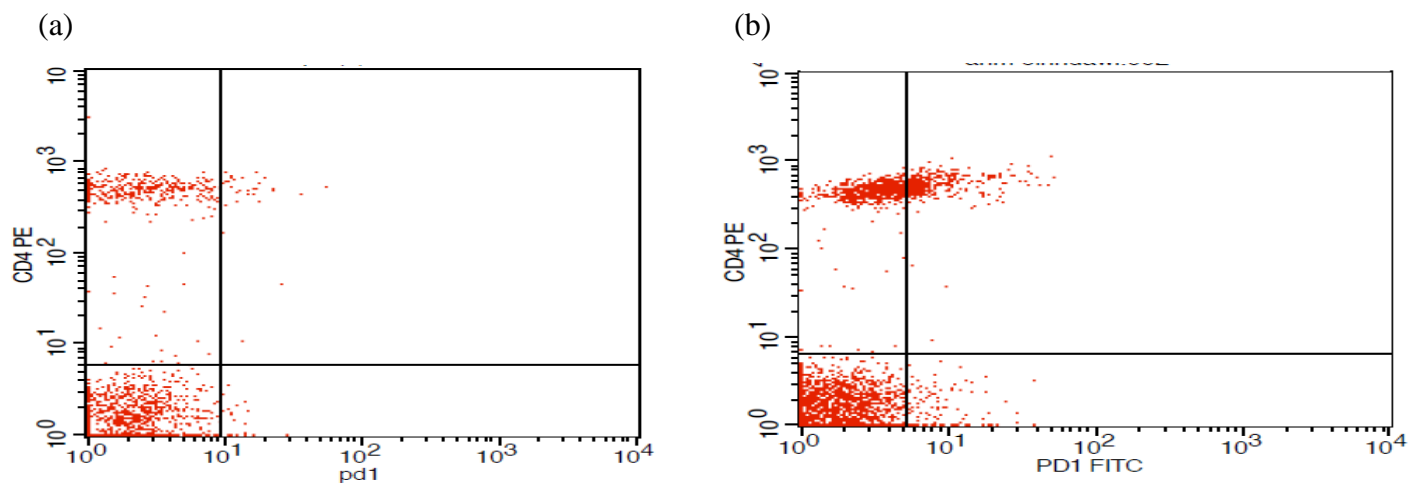


Figure (3): FCM diagram of PD-1 expression in (a) control case and (b) patient case

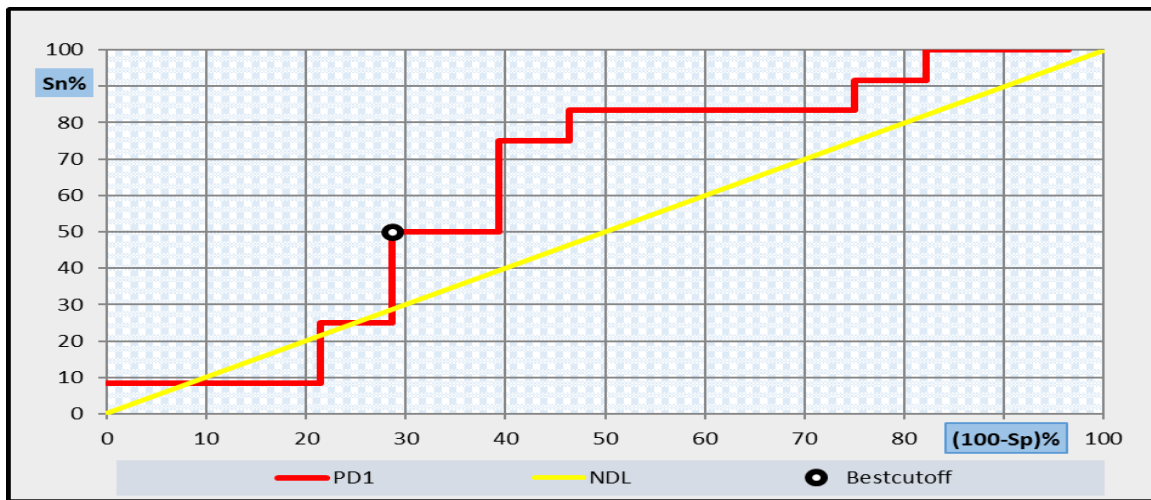


Figure (4): ROC curve of PD-1for discriminating cases with mucocutaneous bleeding than those with cutaneous bleeding.

Test Result Variable(s)	Area	Std. Error	P-value	Asymptotic 95% Confidence Interval	
				Lower Bound	Upper Bound
PD-1	0.603	0.092	0.215(NS)	0.196	0.554

(ROC): Receiver operating characteristic, (Sn: sensitivity 50%), (Sp: specificity 71.9 %)