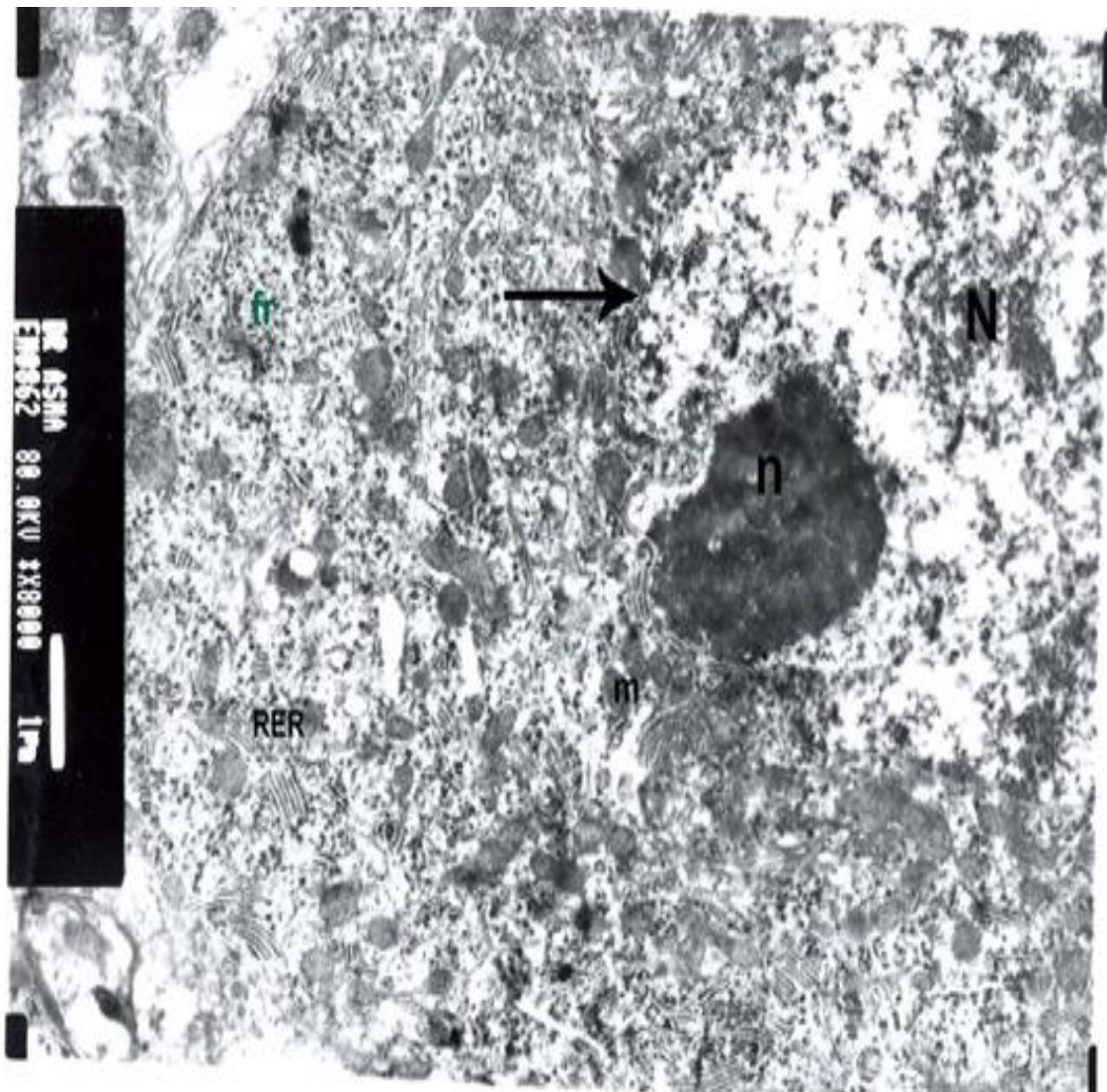
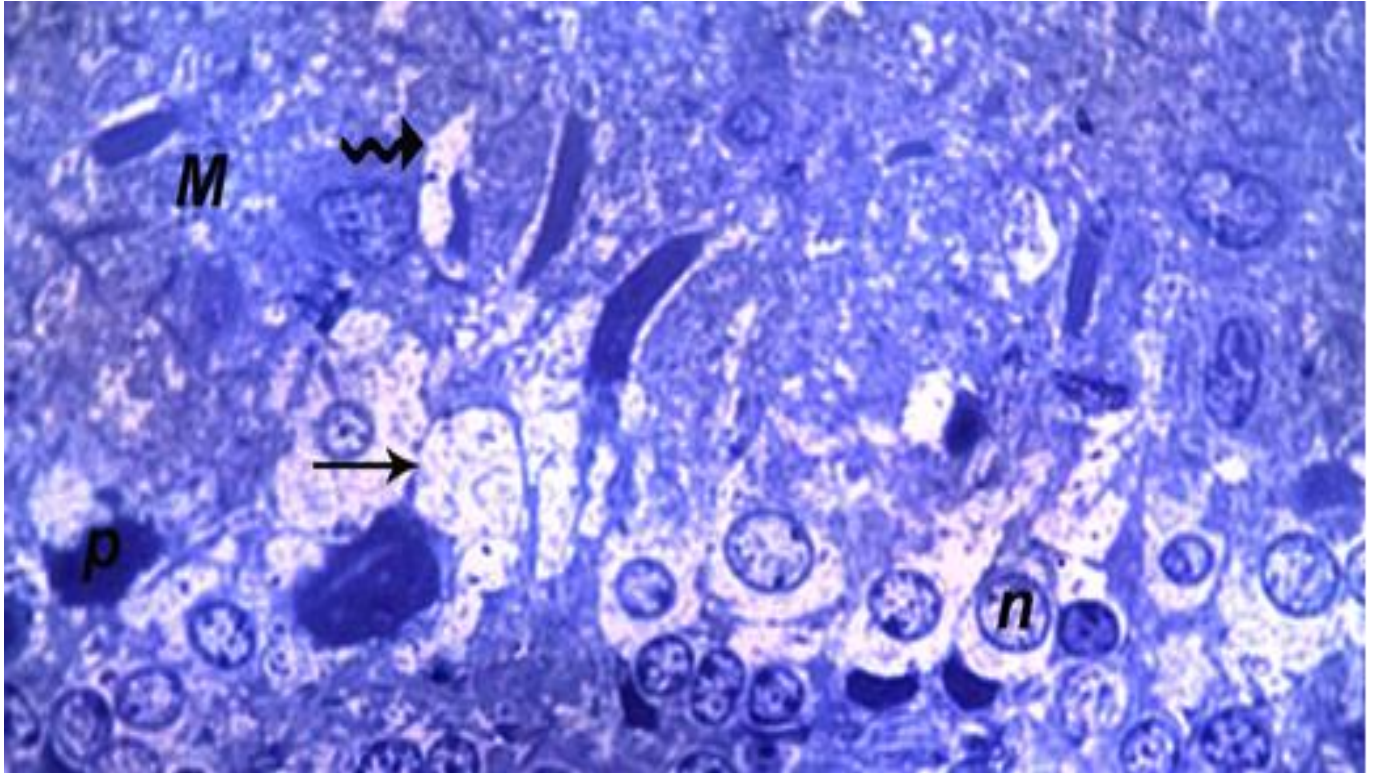


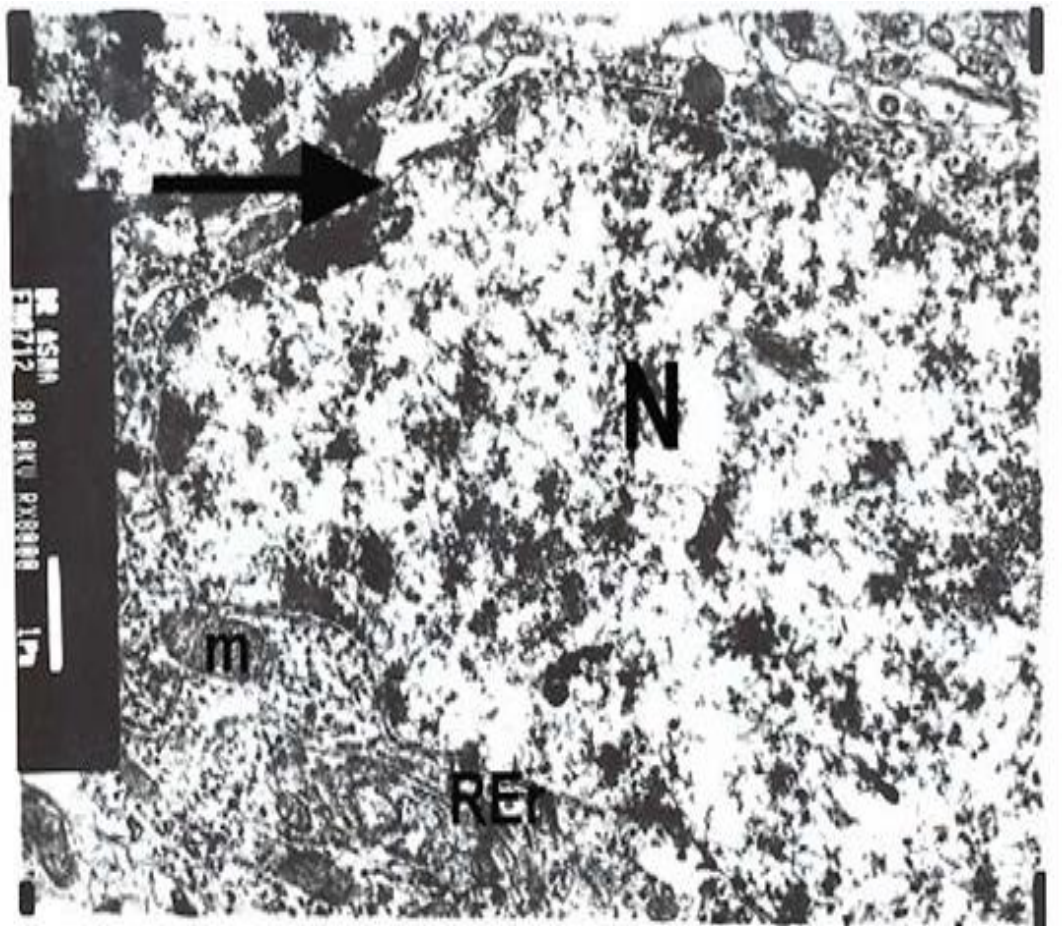
Figure(1): A photomicrograph of a semithin section of the cerebellar cortex of control group showing molecular layer (M).Purkinje cells (p) appear with a large central vesicular nucleus(N).
Toluidine blue, × 1000.



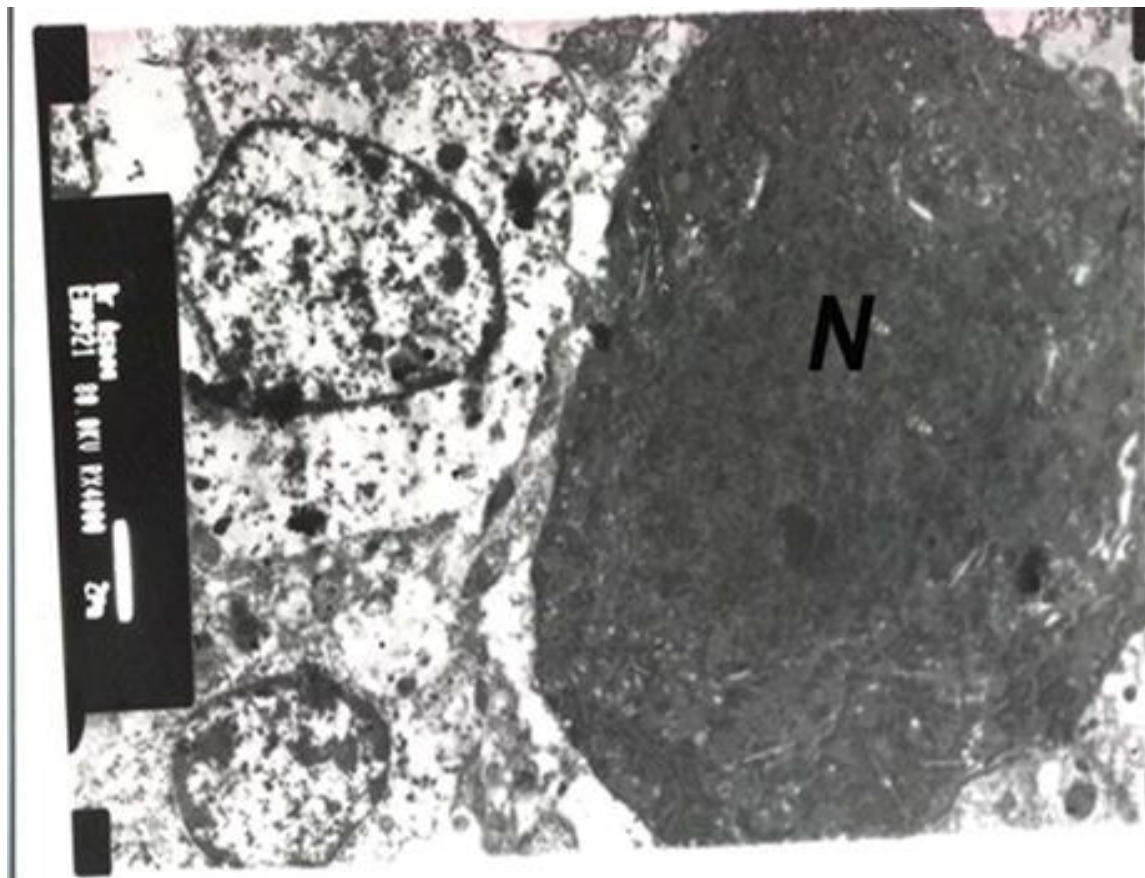
Figure(2): An electro micrograph of control group showing purkinje cell with nucleus (**N**) has well-defined nuclear border(**arrow**) with eccentric nucleolus (**n**) ,the cytoplasm with well-defined organelles and Mitochondria (**m**) with preserved cristae, Rough endoplasmic reticulum (**RER**),and free ribosomes **x8000**



Figure(3):A photomicrograph of a semi thin section of the cerebellar cortex of aspartame treated group show molecular layer(**M**) with empty spaces(**irregular row**) .Purkinje cells(**p**) appear small than control with ill define cytoplasm small size condensed nucleus (**n**) ,there is cell with loss of nucleus (**arrow**) area of degenerated cell also appeared as empty spaces.
Toluidine blue × 1000 .



Figure(4): An electron micrograph of aspartame treated group showing a Purkinje cell with ill defined nucleus(**N**) less condensed chromatin with irregular thin cell membrane (**long arrow**), surrounded by cytoplasm contain mitochondria with destroyed cristae (**m**). dilated rough endoplasmic reticulum (**REr**). **x8000** .



Figure(5): An electro micrograph of aspartame treated group showing shrunken Purkinje cell with Electron dense nucleus(N) with ill define nuclear envelope and cell organells.
x4000

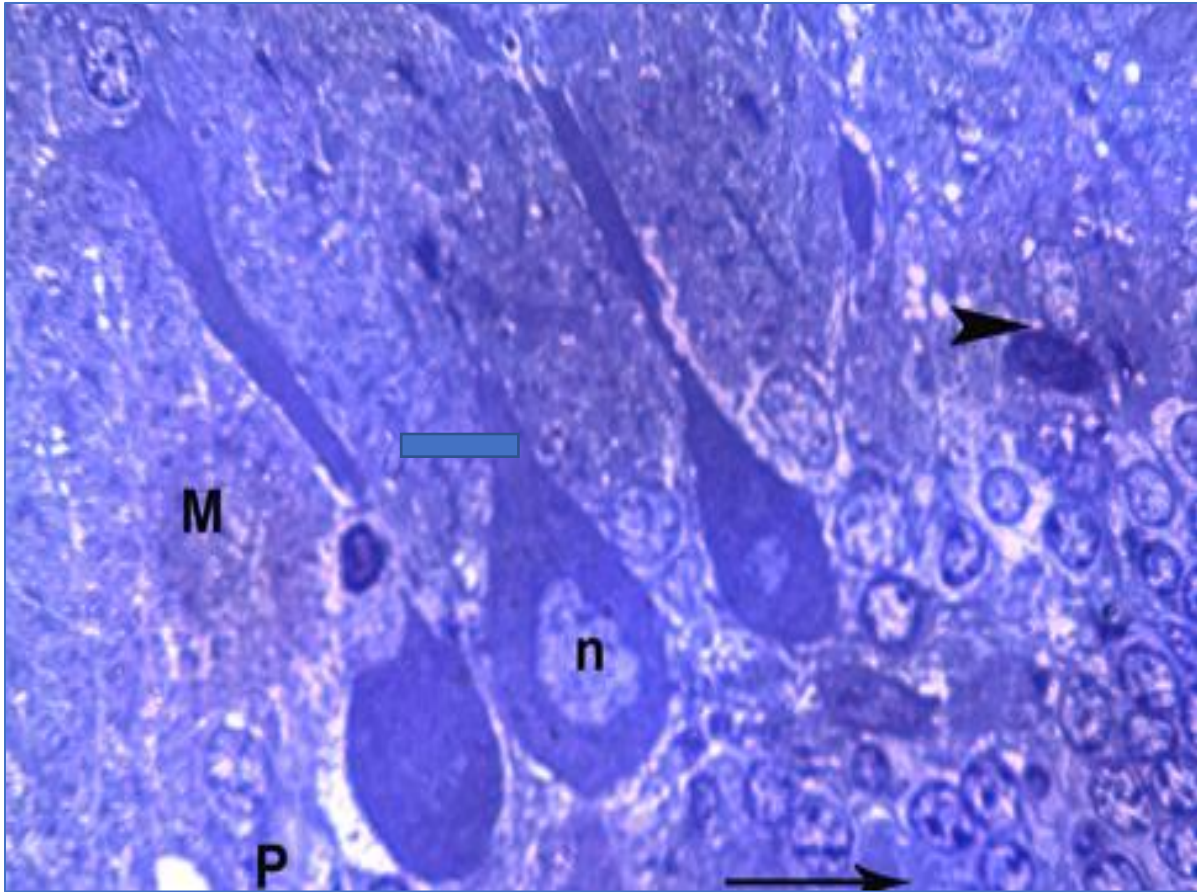
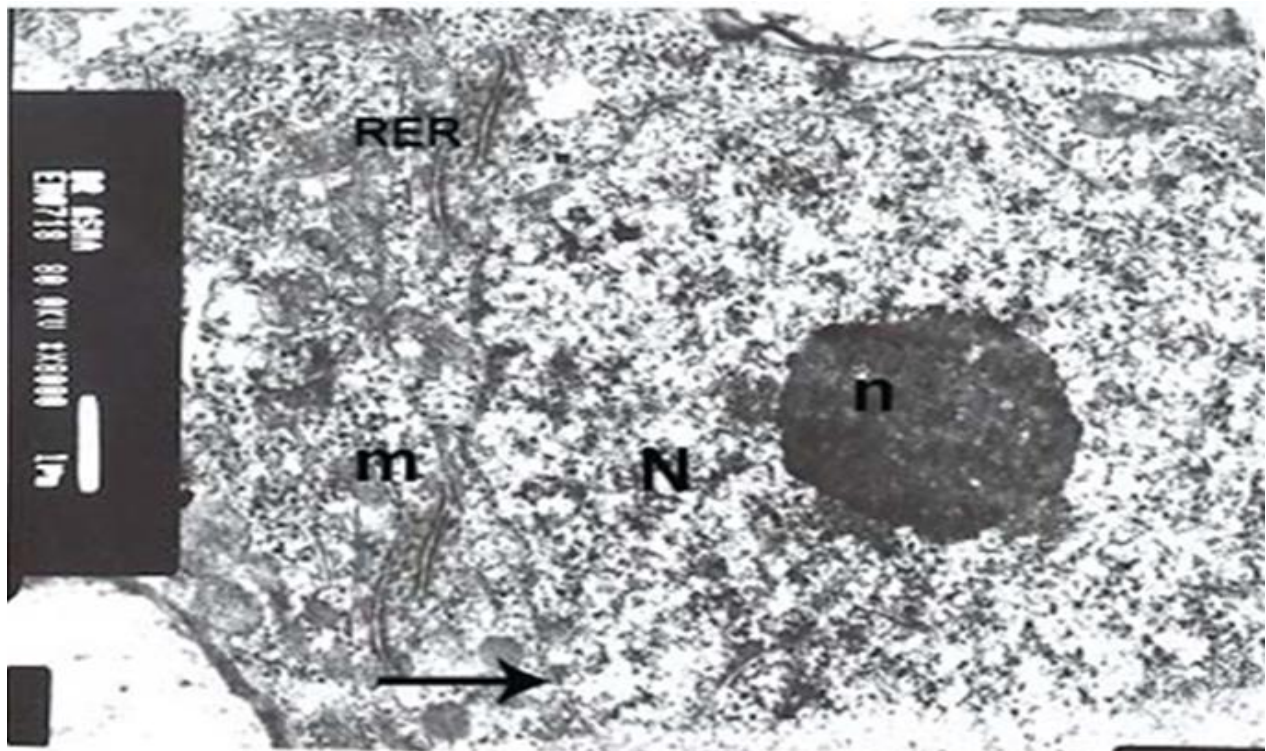


Figure (6): A photomicrograph of a semithin section of the cerebellar cortex of stevia treated group showing no apparent change in molecular cell layer (M), Purkinje cells (p) with ill-defined nucleus and deeply stained cytoplasm , area of shrunken cell with deeply stained pyknotic nuclei (arrow head),. also there normal purkinje cell appears with well defined nucleus (n) .
Toluidine blue x1000



Figure(7): An electron micrograph of stevia treated group showing Purkinje cells with large indented nuclei(N),prominent nucleolus (n)and condensed chromatin surrounded by irregular ill defined nuclear envelope(**arrow**). cytoplasm contain scattered mitochondria(**M**)with destroyed cristae (**m**), rough endoplasmic reticulum(**RER**). organelles..
×4000.

