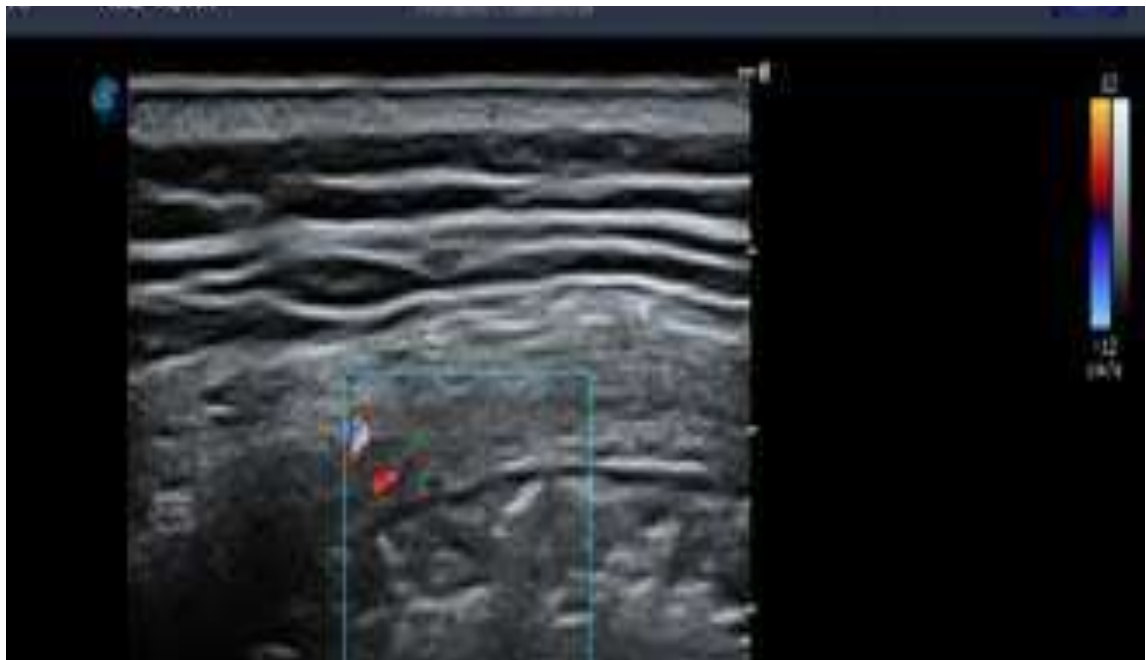


Figure(1) the convex array probe showed the pleural line in the right posterior lower area was unsmooth and thin with diffused B lines and "white lung" sign (12).



Figure(2)convex array probe showed large areas of consolidation in the right posterior upper area and airbronchogram sign (yellow arrow). The pleural line was interrupted (12).



Figure(3) color Doppler ultrasound showed no obvious blood flow signal in the peri-pulmonary consolidation of the left posterior upper area, which was significantly different from that of common inflammatory bacterial pneumonia (12).