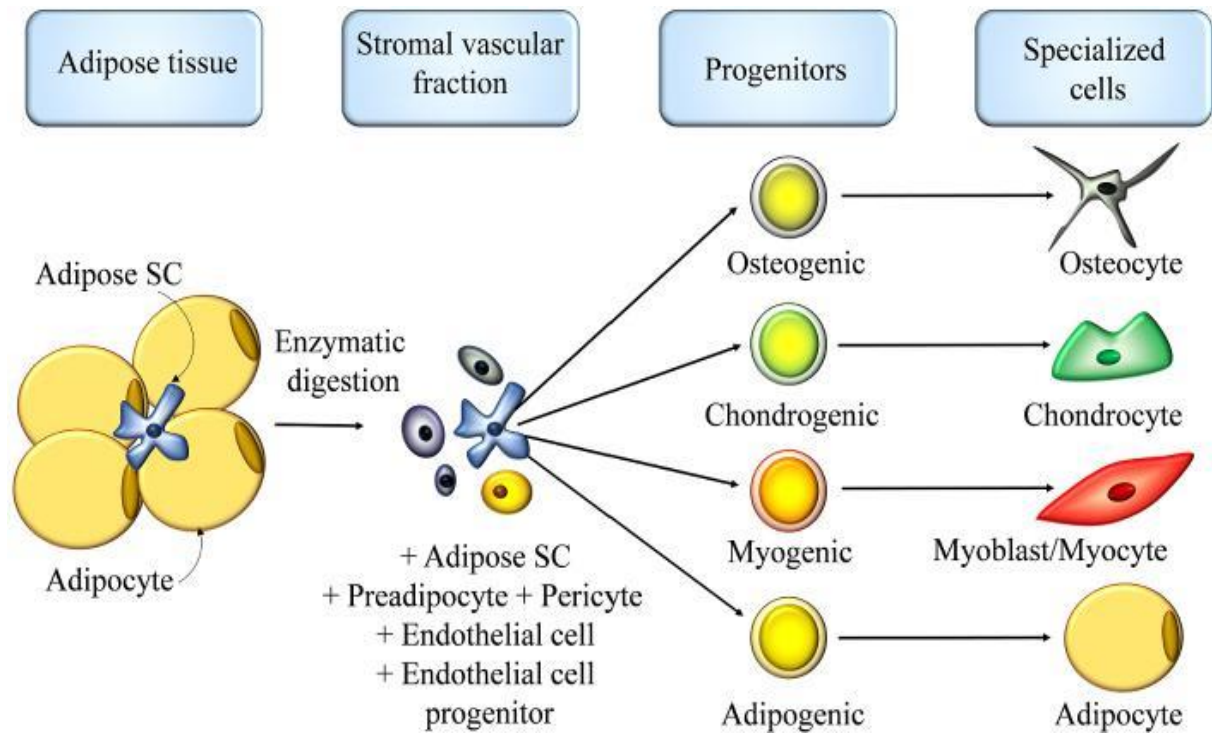
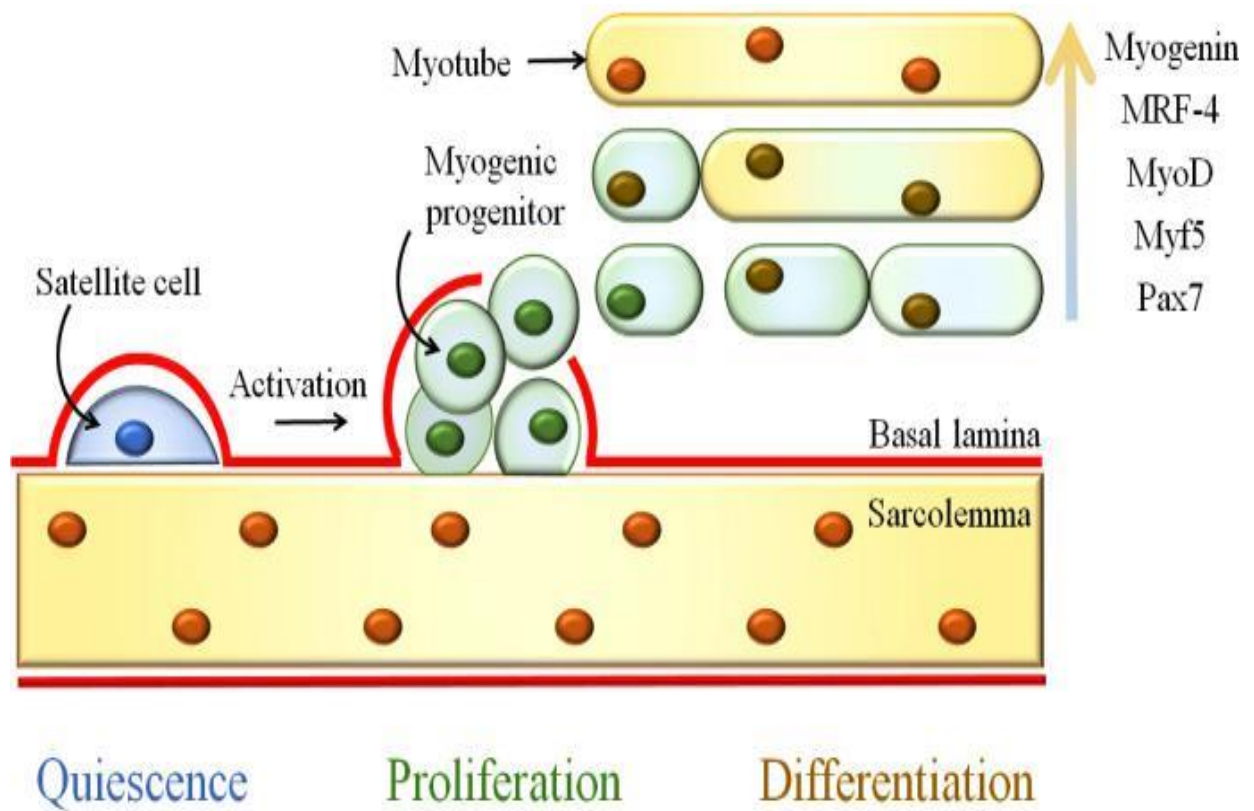


**Figure 1** - Differentiation of neural stem-cells and neural progenitors in the adult human brain. Inset: In vitro proliferation is manifested by an aggregated cell structure, the neurosphere.<sup>(2)</sup>



**Figure 2** - Differentiation of adipose stem-cells and different lineages of progenitors. <sup>(5)</sup>



**Figure 3** – Differentiation of muscular stem-cells from the satellite cell that leaves its quiescence and produces myoblasts that differentiate into polynucleate and fused muscle fibers.<sup>(4)</sup>