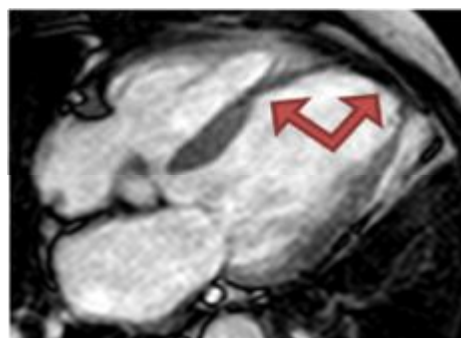
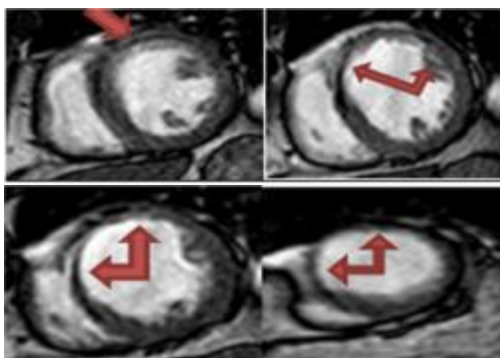


(A)

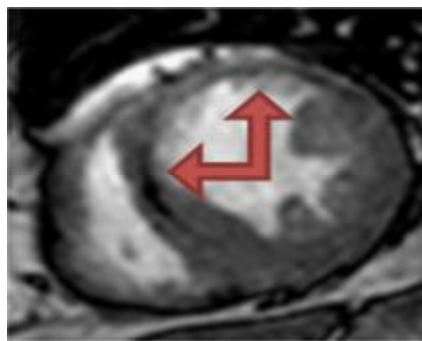


(B)

Figure 1. MR findings in case 1. ECG gated TFE cine sequence in four chamber plane of the heart in systole (A) and in diastole (B). Arrows refer to the thinning of the myocardium (less than 6 mm) at the septal wall and apex of left ventricle.



(A)



(B)

(B)

Figure 2. MR findings in case 1. ECG gated TFE cine sequence in short axis plane of the heart in diastole (A). and in systole (B). Arrows refer to the thinning of the myocardium at the anterior, antero-septal and septal segments at the mid-cavitary and apical levels.

(A)